

OCTOBER 18-19, 2024

OSAKA, JAPAN



# 2024

## WORLD NEUROSCIENCE AND PSYCHIATRY CONFERENCE

Theme: Shaping the Future of  
Mental Health and  
Neuroscience



EPISIRUS SCIENTIFICA®  
A Path For Discovery

# 2024WNPC



+1 302 440 1610



[neuroscience.episirus.org](https://neuroscience.episirus.org)



[neuroscience@episirus.org](mailto:neuroscience@episirus.org); [info@episirus.org](mailto:info@episirus.org)

# INVITATION

2024WNPC

Dear Colleagues,

Episirus Scientifica welcomes you to attend 2024 World Neuroscience and Psychiatry Conference (2024WNPC) held during October 18-19, 2024 at Osaka, Japan with the theme "Shaping the Future of Mental Health and Neuroscience". This international meet (2024WNPC) in collaboration with national and international societies anticipates hundreds of participants including Keynote speakers, Oral and Virtual presentations by renowned speakers and poster presentations by students besides delegates around the world. This conference perhaps a giant event that creates an ideal platform to share expertise addressing current advancements involved in Neuroscience and Psychiatry. It will be a wonderful opportunity for all the delegates as it provides an international networking opportunity to collaborate with the world-class critical care and Medical Associations.

Life is full of give and take make it count in your professional life, attend the neuro Conference to network with your peers, exchange expertise and experiences, and arm yourself with the latest information to take your department to the next level.

We look forward to see you in Osaka this October.

Sincerely,  
2024WNPC  
Organizing Committee Members

## ESE PERMANENT COMMITTEE MEMBERS



**Mohammed Naeem**  
King Abdullah Specialized  
Children's Hospital,  
Saudi Arabia



**Panagiotis Vlamos**  
Ionian  
University, Greece



**Retnaningsih**  
Dr. Kariadi General  
Hospital, Indonesia



**Ahmed Fouad**  
Ain Shams University,  
Cairo, Egypt





EPISIRUS SCIENTIFICA®  
A Path For Discovery

# ABOUT US

## Episirus Scientifica

Episirus Scientifica (ES) is initiated to meet a need and to pursue collective goals of the scientific community specifically focusing in the field of Sciences, Engineering and technology to endorse exchanging of the ideas & knowledge which facilitate the collaboration between the scientists, academicians and researchers of same field or interdisciplinary research. Episirus Scientifica (ES) group is proficient in organizing conferences, meetings, seminars and workshops with the ingenious and peerless speakers throughout the world providing you and your organization with broad range of networking opportunities to globalize your research and create your own identity. Our conference and workshops can be well titled as 'ocean of knowledge' where you can sail your boat and pick the pearls, leading the way for innovative research and strategies empowering the strength by overwhelming the complications associated with in the respective fields.

Participation from 60 different countries and 500+ different Universities have contributed to the success of our conferences.

Our first International Conference was organized on Heart & Neurology in Bangkok, Thailand. Our conferences usually run for 2-3 days completely covering Keynote & Oral sessions along with workshops and poster presentations. Our organization runs promptly with dedicated and proficient employees' managing different conferences throughout the world, without compromising service and quality.

**Our Registered Office Address:**

3911 Concord Pike #8030 SMB#33612  
Wilmington,  
DE 19803, USA

**Contact Us:**

+1 302 440 1610

**Website:** <https://episirus.org> , <https://neuroscience.episirus.org>

**Email :** [info@episirus.org](mailto:info@episirus.org) , [neuroscience@episirus.org](mailto:neuroscience@episirus.org)



# About 2024WNPC

## **2024WNPC will follow the Hybrid Event Model**

After a successful hybrid 2023WNPC World Neuroscience and Psychiatry Conference in Singapore, the 8th Edition of 2024 World Neuroscience and Psychiatry Conference (2024WNPC) will be hosted by Episirus Scientifica at Osaka, Japan During October 18-19, 2024.

2024 World Neuroscience and Psychiatry Conference (2024WNPC) is the 8th Edition educational event which is designed to advance knowledge and expertise in neurology, neuroscience, and psychiatry that rotate between continents and are organized in collaboration with national and international pediatric societies and associations. This International 2024WNPC Congress is going to be held during October 18-19, 2024 in Osaka. Japan.

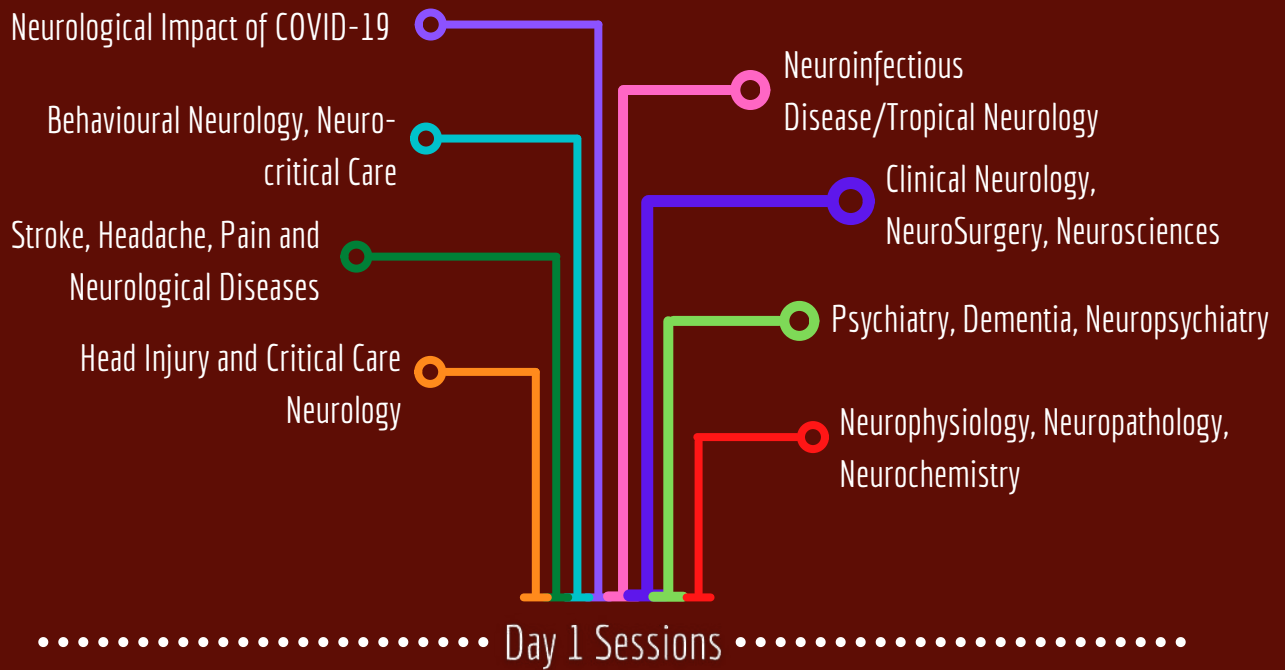
The conference is targeted to the international Mental Health community as well as other healthcare professionals involved in multidisciplinary neurological disorders; For every community, there continues to be a need for mental health and medical teams to evaluate and treat the patient. It is appropriate that this neurology and psychiatry Conference take the action of leading a continuing education venue for the complex operative and mental health challenges and become the epitome of such series.

The 2024 World Neuroscience and Psychiatry Conference (2024WNPC) will be organized around the theme **'Shaping the Future of Mental Health and Neuroscience'**.

The conference program for the 2 days includes a line-up of local and international speakers with inspiring insights to share on advancing neurological, and mental health Care through the lens of patient and family experiences.

---

# PRELIMINARY SCIENTIFIC PROGRAM



DAY 1: October 18, 2024

Hall : Announce Soon

Registration

Opening Ceremony

## KEYNOTE FORUM

Group Photo Session

Networking and Refreshment Break

Workshop Session | Symposium

Speaker Sessions

Session Chair | Session Co-Chair

Session 1 Neurological Impact of COVID-19

Session 2 Neuroimmunology, Behavioural Neurology, Neuro-critical Care

Session 3 Stroke, Headache, Pain and Neurological Diseases

Session 4 Head Injury and Critical Care Neurology

Session 5 Neuroinfectious Disease/Tropical Neurology

Lunch Break

Session 6 Clinical Neurology, NeuroSurgery, Neurosciences

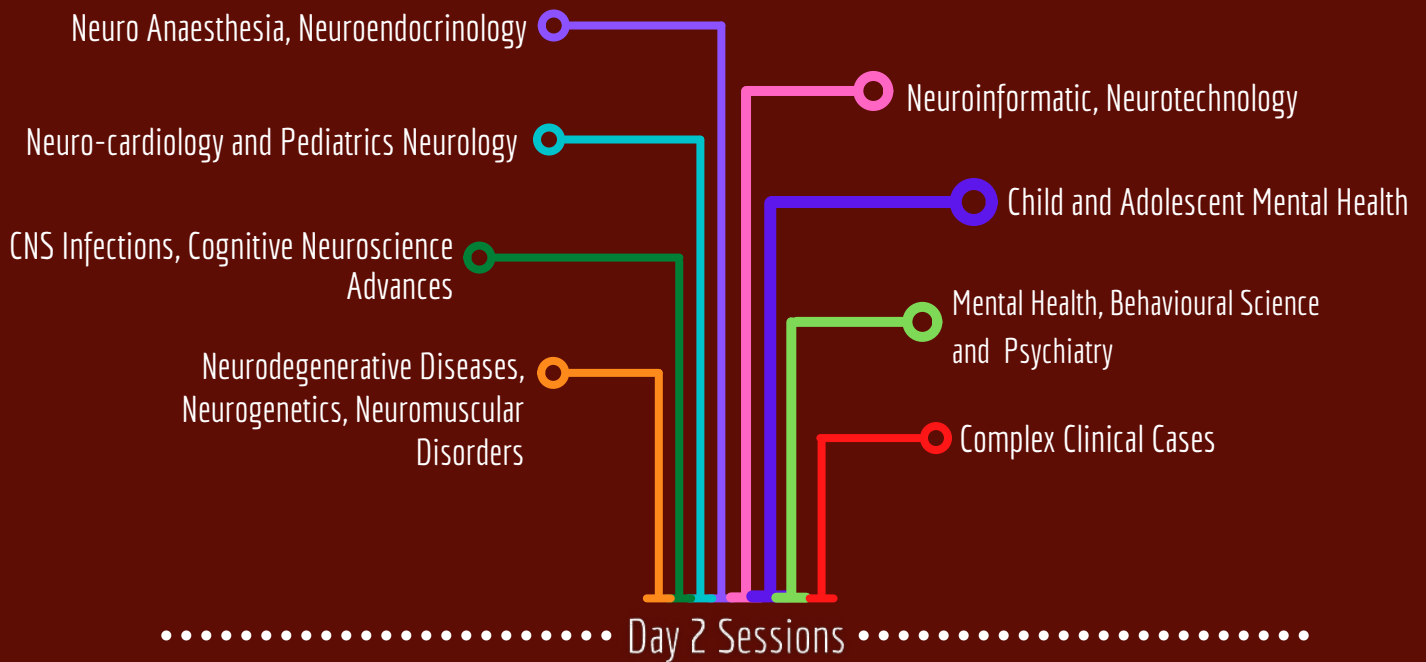
Session 7 Psychiatry, Dementia, Neuropsychiatry

Session 8 Neurophysiology, Neuropathology, Neurochemistry

Networking and Refreshment Break

Panel Discussions

END OF DAY 1



**DAY 2: October 19, 2024**

**Hall : Announce Soon**

**Registration**

**Opening Ceremony**

# KEYNOTE FORUM

**Group Photo Session**

**Networking and Refreshment Break**

**Workshop Session | Symposium**

**Speaker Sessions**

**Session Chair | Session Co-Chair**

**Session 9**

Neuro Anaesthesia , Neuroendocrinology

**Session 10**

Mental Health, Behavioural Science and Psychiatry

**Session 11**

Neurodegenerative Diseases, Neurogenetics, Neuromuscular Disorders

**Session 12**

Neuroinformatics

**Session 13**

Neurotechnology

**Session 14**

Cognitive Neuroscience Advances

**Session 15**

Child and Adolescent Mental Health

**Lunch Break**

**Session 16**

Complex Clinical Cases

**Pannel Discussions**

**Networking and Refreshment Break**

**Young Researcher Forum**

**Poster Session**

**Award Ceremony**

**END OF DAY 2**

*NOTE: Program Schedule is subject to change with final allotment of the speaker slots*

# **Key Dates:**

**Abstract Submissions & Registrations are Open**

**Early Bird Registration: April 14, 2024**

**Abstract Submission Deadline: April 30, 2024**

**Speaker Registration: May 15, 2024**

Abstract Submission and Guidelines:

<https://neuroscience.episirus.org/abstract-submission/>

For Online Registration :

<https://neuroscience.episirus.org/registration/>

Email Id :

[neuroscience@episirus.org](mailto:neuroscience@episirus.org) ; [info@episirus.org](mailto:info@episirus.org)

## **Guidelines for Submission:**

Before you begin, please prepare the following information:

Presenting author's contact details:

Email address

Full postal address

Daytime and evening phone number

Presentation type – please choose from one of the following:

Poster presentation

E-poster presentation

Oral presentation

Video presentation

Author and co-authors' details:

Full first and family name(s)

Affiliation details: department, institution / hospital, city, state (if relevant), country

Abstract title– limited to 30 words in Title Case

Abstract text– limited to 250-300 words

Tables– A maximum of 3 tables of up to 10 rows x 10 columns can be included per abstract

Graphs and images– It is important to note that each image included in the abstract is worth 30 words. A maximum of 3 images can be included per abstract. You may upload graphs in JPG, GIF or PNG format.

\*Please note that abstracts must be SUBMITTED before the deadline in order to be sent to review for inclusion in the Scientific Program.

Reviewing: All abstracts will be forwarded for the Scientific Committee's review. If an abstract is accepted, the presenting author must register.

Authors who submit an abstract but fail to register by May 30, 2024 run the risk of having their abstracts withdrawn.

Letters of acceptance will be send once your abstract has been reviewed and accepted. If you have not received any notification, please contact the program manager:

[pediatriccongress@episirus.org](mailto:pediatriccongress@episirus.org)

Consent to upload Abstract, Presentation Material or lecture's video

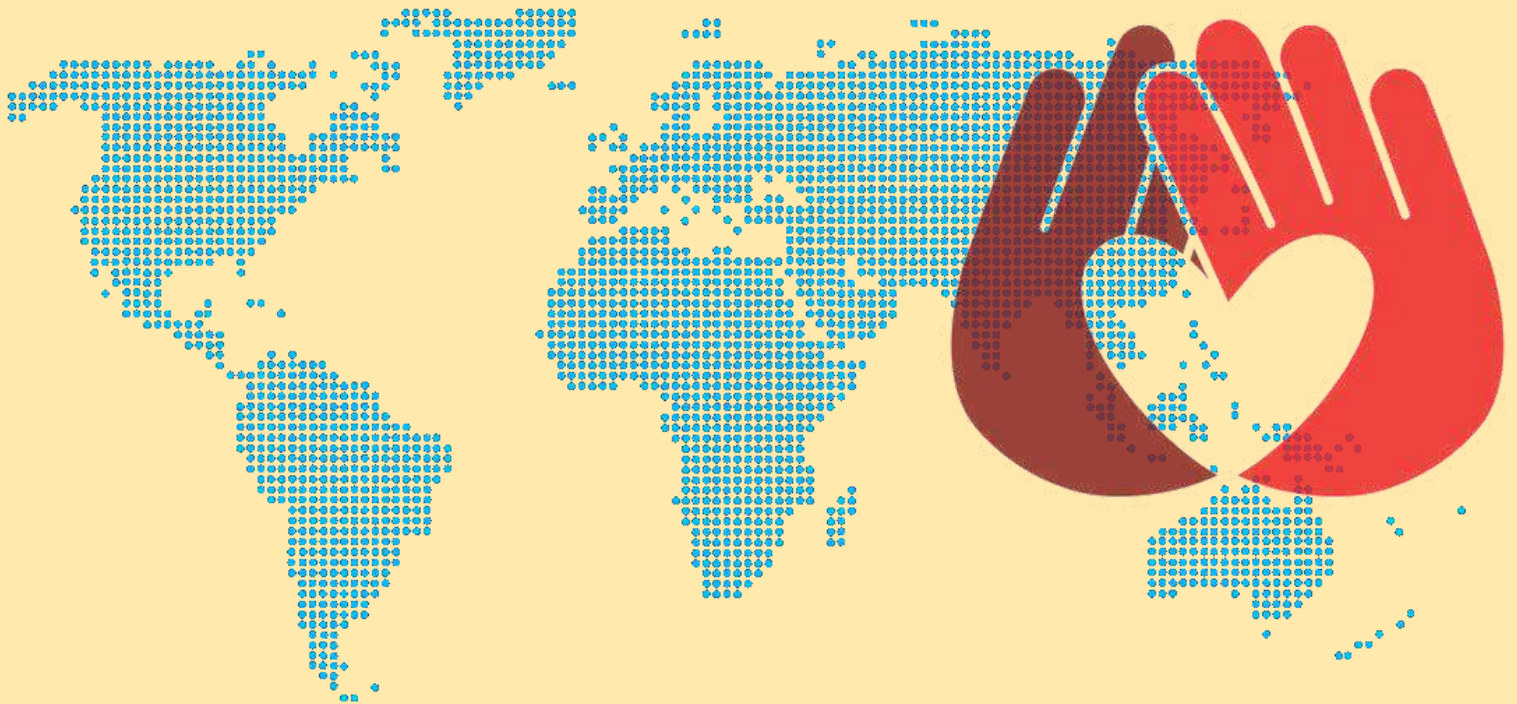
The Conference reserves the right to publish on the conference website:

Some or all abstracts in HTML or PDF format

Some or all of the presentations in PDF format

Some of all recordings/videos/photographs of the lectures

# **EPISIRUS SCIENTIFICA EVENT (ESE) AMBASSADOR REFERRAL PROGRAM**



## **Be an ESE 2024WNPC Ambassador and earn FREE Registration!**

- Refer one new participant and you BOTH receive 15% OFF on Registration.
- Refer 5 or more new participants and your 2024 Conference Registration + Accommodation will be FREE + Earn Gifts for your referred participants.

## **Who makes ESE strong? YOU.**

- You make ESE the largest voice in scientific conferences in the world.
- You know the value of scientific conferences and can share it with your colleagues.
- You can encourage them to join ESE to maintain the influence of the medical and scientific community.

## **Top 3 Reasons to Refer Participants:**

- Create a stronger community of peers to collaborate with
- Increase your network to become a leader in your workplace/academic institution
- Referring Participants is FUN and EASY!

**The Rules:** The ESE Ambassador referral program is designed to encourage current participants to spread the word about the value of ESE conferences.

## **Additional Benefits: Per Year, Top 3 Conference Ambassador will receive:**

Travel Reimbursement\*  
Best Conference Ambassador Award

This offer expires **June 30th, 2024.**



# VENUE AND HOSPITALITY



## Venue : ANA Crowne Plaza Osaka

Address: 1 Chome-3-1 Dojimahama,  
Kita Ward, Osaka, 530-0004, Japan  
Phone: +81 6-6347-1112



## Guide to nearby sightseeing spots

ANA Crowne Plaza Osaka is located in the center of Osaka. To the east is Nakanoshima Park, which is full of greenery, and to the south is Yodoyabashi, one of Osaka's leading office districts. To the north is Kitashinchi, a social district at the heart of Osaka.

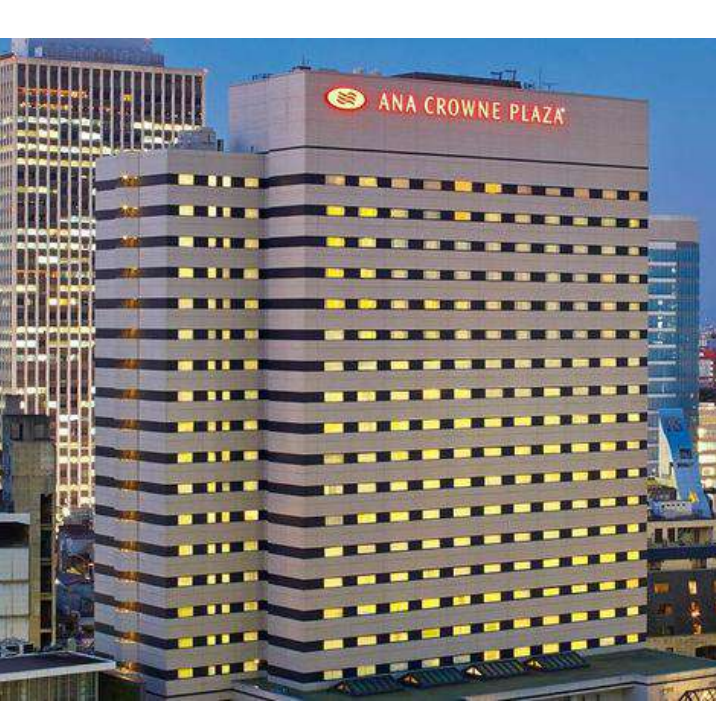
Furthermore, it is a very convenient location to go sightseeing in various parts of Kansai, such as Kobe, Kyoto and Nara.

## Transportation

### How Can You Reach Osaka:

1. By Air: Osaka is served by two major airports: Kansai International Airport (KIX) and Osaka International Airport (Itami Airport). Kansai International Airport is the primary international gateway, located on an artificial island in Osaka Bay, while Osaka International Airport primarily handles domestic flights.
2. By Train: The extensive Japanese rail network connects Osaka with other major cities such as Tokyo, Kyoto, Hiroshima, and more. The Shinkansen (bullet train) offers high-speed connections, making travel between cities efficient and comfortable.
3. By Bus: Long-distance buses also operate between Osaka and other cities in Japan. These buses offer a more budget-friendly option for travel but may take longer compared to trains.
4. By Car: Highways and expressways link Osaka with other cities in Japan. However, driving in Japan may be challenging for foreign visitors due to language barriers and different traffic rules.

Once in Osaka, the city has an efficient public transportation system including trains, subways, and buses, making it easy to navigate and explore its various attractions.



# Osaka Attractions

**Osaka, a vibrant city in Japan, offers a wide range of attractions and activities for visitors to enjoy. Whether you're interested in history, food, shopping, or entertainment, Osaka has something for everyone.** Japan is renowned for its advanced healthcare system, cutting-edge medical research, and technological innovation. Osaka, being a major city in Japan, is home to world-class medical facilities and research institutions. Osaka provides access to experts, facilities, and research advancements that enhance the quality of medical event. Osaka attract healthcare professionals, researchers, and industry experts from across Asia and around the world, fostering valuable networking opportunities and knowledge exchange.

Osaka is well-connected to major cities around the world through International Airport. The city's efficient public transportation system, including the Shinkansen (bullet train), makes it easy for attendees to travel to and from the conference venue. So, in 2024 **Episirus Scientifica** scheduled the World Neuroscience & Psychiatry Conference **(2024WNPC)** in the beautiful city Osaka to bring together the world's best leading experts, researchers, scientists, professors, medical device manufacturing companies and the most respected leaders to exchange and share their meaningful experiences of various methods involved in Neuroscience, Neurology & Psychiatry .



# GLIMPSES OF PREVIOUS CONFERENCE



